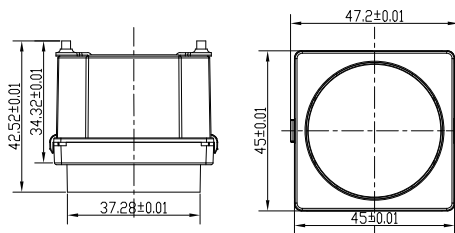


DK ROTARY DIMMER SWITCH



Item No.: NorDim200-DK

⚠️ ⚠️ DANGER

HAZARD OF ELECTRIC SHOCK, EXPLOSION OR ARC FLASH

- Turn off all power supplying this equipment
- Use a voltage tester of appropriate rating

Failure to follow these instructions will result in death or serious injury.

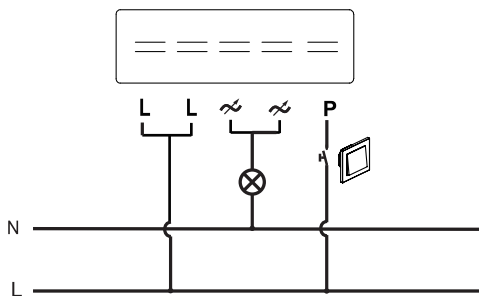
⚠️ WARNING

HAZARD OF FIRE

Failure to follow these instructions can result in death, serious injury, or equipment damage.

LED DIMMER SWITCH: 5-200VA/W

Operating Voltage	220-240 V
Frequency	50 Hz
Maximum Load	200W/VA
Minimum Load	5 W
Dimming Mode	Trailing Edge
Control Method	One way or multiway
Dimmable LED lamps	5-200VA/W
LV Halogen lighting with electronic transformers	10-200W
Incandescent lighting	10-200W

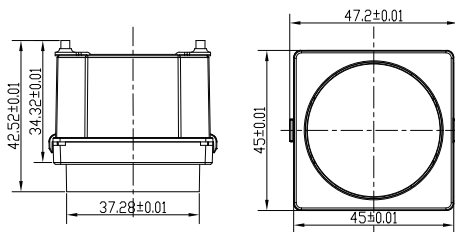


PLEASE NOTE:

- 1.This is a two-wire dimmer and service to be connected as shown in the diagram above.
- 2.You can not connect more than one dimmer in parallel to operate the same charge from two points.

Features

1. Suitable for both retrofit and new installations.
2. No neutral required.
3. Soft-start to protect lamp and driver.
4. Overload, over-temperature and over-current protection.



Varenr.:
NorDim200-DK

Vare beskrivelse:
LED DÆMPER 200W

⚠ ⚠ FARE

FARE FOR ELEKTRISK STØD

- Sluk for al strømtilslutning til dette udstyr før montering.
- Manglende overholdelse af disse instruktioner kan resultere i død eller alvorlige skader.

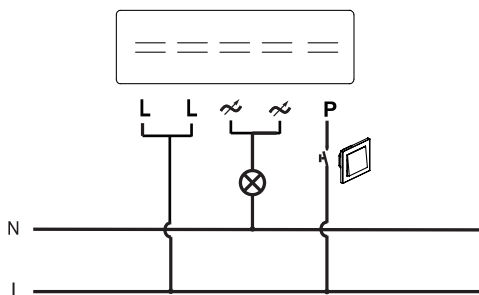
⚠ ADVARSEL

BRANDFARE

Manglende overholdelse af disse instruktioner kan resultere i død, alvorlige skader eller skade på udstyr.

LED DÆMPER 5-200VA/W

Spænding	220-240V
Frekvens	50 Hz
Max. belastning	200W/VA
Min. belastning	5 W
Dæmpningsmode	Bagkantsdæmp
Styringsmetode	Enkelt eller korrespondance
Dæmpbare LED lamper	5-200VA/W
Halogen med elektronisk transformer	10-200W
Glødepærer	10-200W



OBS:

1. Dette er en 2-ledningsdæmper, som skal forbindes som angivet i diagrammet ovenfor.
2. Det er ikke muligt at parallel forbinde flere dæmpere som korrespondance styring.

Funktioner

1. Passer til både nye installationer samt retrofit.
2. Kræver ikke nulledning.
3. Soft-start for at beskytte lyskilde og driver.
4. Beskyttet mod overspænding.