

V-TAC

Meaningful Innovation.

WEEE Number: 80133970

INSTRUCTION MANUAL GARDEN SPIKE LAMP OUTDOOR SERIES



03 YEAR
WARRANTY*

IP65
RATING

TECHNICAL DATA

MODEL	VT-44005
SKU	24227, 24228
RATED LOAD (MAX)	35W
HOLDER	GU10 (Bulb not included)
MATERIAL	Aluminium
DIMENSION	Φ56x90x285mm
IK RATING	IK06
INPUT VOLTAGE	AC 220-240V, 50Hz

INTRODUCTION

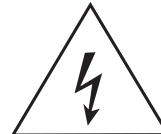
Thank you for selecting and buying V-TAC product. V-TAC will serve you the best. Please read these instructions carefully before starting the installation and keep this manual handy for future reference. If you have any another query, please contact our dealer or local vendor from whom you have purchased the product. They are trained and ready to serve you at the best. The warranty is valid for 3 years from the date of purchase. The warranty does not apply to damage caused by incorrect installation or abnormal wear and tear. The company gives no warranty against damage to any surface due to incorrect removal and installation of the product. The products are suitable for 10-12 Hours Daily operation. Usage of product for 24 Hours a day would void the warranty. This product is warranted for manufacturing defects only.

WARNING

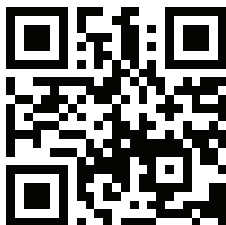
1. Please make sure to turn off the power before starting the installation.
2. Installation should only be done by a certified electrician.
3. Proper grounding should be ensured throughout the installation.
4. Waterproof Box not included.



This marking indicates that this product should not be disposed of with other household wastes.



Caution, risk of electric shock.



MULTI-LANGUAGE MANUAL QR CODE

Please scan the QR code to access the manual in multiple languages.



FR
Cet appareil, ses accessoires et cordons se recyclent

À DÉPOSER EN MAGASIN

À DÉPOSER EN DÉCHÈTERIE



Points de collecte sur www.quefairedemesdechets.fr
Privilégiez la réparation ou le don de votre appareil !

RoHS

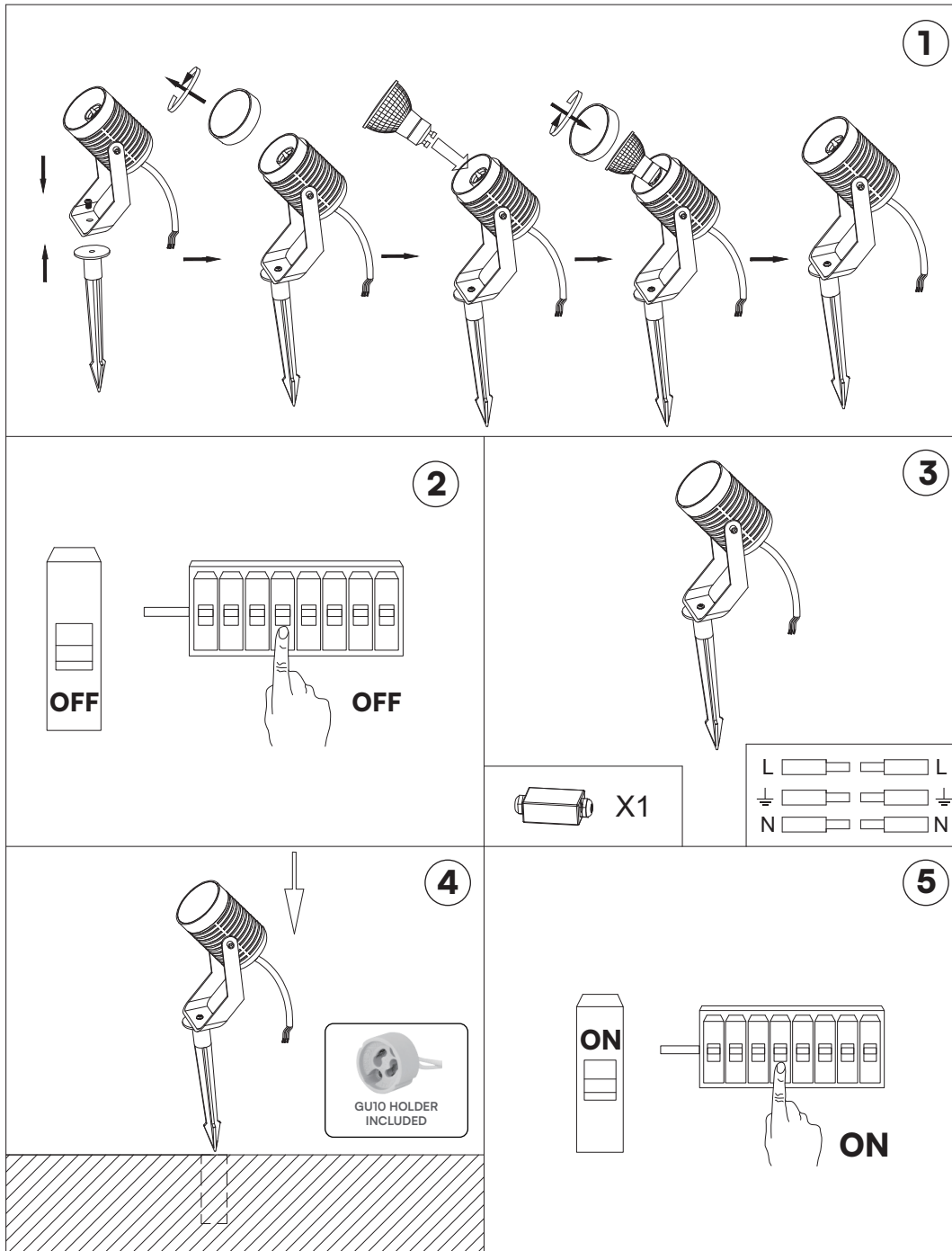


UK
CA



IN CASE OF ANY QUERY/ISSUE WITH THE PRODUCT, PLEASE REACH OUT TO US AT: SUPPORT@V-TAC.EU
FOR MORE PRODUCTS RANGE, INQUIRY PLEASE CONTACT OUR DISTRIBUTOR OR NEAREST DEALERS.
V-TAC EUROPE LTD. BULGARIA, PLOVDIV 4000, BUL.L.KARAVELOW 9B

INSTALLATION DIAGRAM



INSTALLATION INSTRUCTIONS

- Install the floor socket and GU10 light source according to the provided diagram.
- Switch off the power supply before starting the installation.
- Connect the lamp to the mains power supply, ensuring appropriate waterproofing measures are applied.
- Securely position the lamp in its designated location.
- Turn on the power and test the lamp.

V-TAC WEST EUROPE LTD. IN CASE OF ANY QUERY/ISSUE WITH THE PRODUCT, PLEASE REACH OUT TO US AT SUPPORT@V-TAC.EU FOR MORE PRODUCTS RANGE, INQUIRY PLEASE CONTACT OUR DISTRIBUTOR OR NEAREST DEALERS.
V-TAC WEST EUROPE LTD. GROUND FLOOR, 71 LOWER BAGGOT STREET, DUBLIN O2, IRELAND DO2 P593

V-TAC UK LTD. IN CASE OF ANY QUERY/ISSUE WITH THE PRODUCT PLEASE REACH OUT TO US AT SUPPORT@VTACEXPORTS.COM V-TAC, 5A TUNGSTEN PARK, DOWNS ROAD, WITNEY, OXFORDSHIRE, OX29 OAX